

**TECHNICAL MANUAL
ORGANIZATIONAL, DIRECT SUPPORT, AND GENERAL SUPPORT
MAINTENANCE REPAIR PARTS AND SPECIAL TOOLS LISTS
(INCLUDING DEPOT MAINTENANCE REPAIR PARTS AND SPECIAL TOOLS)
FOR
METEOROLOGICAL MEASURING SET
AN/TMQ-22
(NSN 6660-00-197-6335)**

HEADQUARTERS, DEPARTMENT OF THE ARMY

SEPTEMBER 1976

**ORGANIZATIONAL, DIRECT SUPPORT, AND
GENERAL SUPPORT MAINTENANCE
REPAIR PARTS AND SPECIAL TOOLS LISTS
(INCLUDING DEPOT MAINTENANCE REPAIR PARTS AND SPECIAL TOOLS)
FOR
METEOROLOGICAL MEASURING SET AN/TMQ22
NSN 6660-00-197-6335**

Current as of 15 April 1976

REPORTING OF ERRORS

You can improve this manual by recommending improvements using DA Form 2028-2 (Test) located in the back of the manual. Simply tear out the self addressed form, fill it out as shown on the sample, fold it where shown, and drop it in the mail.

If there are no blank DA Form 2028-2 (Test) in the back of your manual, use the standard DA Form 2028 (Recommended Changes to Publications and Blank Forms) and forward to the Commander, US Army Electronics Command, ATTN: DRSEI, MA-Q, Fort Monmouth, New Jersey 07703.

In either case a reply will be furnished direct to you.

Table of Contents

	Page	Illus Figure
SECTION I. Introduction.....	1	
II. Repair parts list	5	
GROUP 00 Meteorological Measuring Set AN/TMQ-22.....	5	1
01 Panel assembly	9	2
0101 Barometer.....	13	3
0102 Printed circuit board assembly	17	4
02 Wind detector	21	5
03 Temp-dew sensor	25	6
04 Cable assemblies	27	7
SECTION III. Special tools list (Not applicable)		
IV. National stock number and part number index	28	

**SECTION I
INTRODUCTION**

1. Scope

This manual lists repair parts required for performance of organizational, direct support, and general support maintenance of the AN/TMQ22.

2. General

This Repair Parts and Special Tools List is divided into the following sections:

a. Section II. Repair Parts List. A list of repair parts authorized for use in the performance of maintenance. The list also includes parts which must be removed for replacement of the authorized parts. Parts lists are composed of functional groups in ascending numerical sequence, with the parts in each group listed in figure and item number sequence.

b. Section III. Special Tools List. Not applicable.

c. Section IV. National Stock Number and Part Number Index. A list, in ascending National item identification number (NIIN, last 9 digits) sequence, of all National stock numbers appearing in the listings, followed by a list, in alphameric sequence, of all part numbers appearing in the listings. National stock number and part numbers are cross-referenced to each illustration figure and item number appearance.

3. Explanation of Columns

The following provides an explanation of columns found in the tabular listings:

a. Illustration. This column is divided as follows:

(1) Figure number. Indicates the figure number of the illustration in which the item is shown.

(2) Item number. The number used to identify each item called out in the illustration.

b. Source, Maintenance, and Recoverability Codes (SMR).

(1) Source code. Source codes are assigned to support items to indicate the manner of acquiring support items for maintenance, repair, or overhaul of end items. Source codes are entered in the first and second positions of the Uniform SMR Code format as follows:

<i>Code</i>	<i>Definition</i>
-------------	-------------------

PA-Item procured and stocked for anticipated or known usage.

PB-Item procured and stocked for insurance purpose because essentiality dictates that a minimum quantity be available in the supply systems.

KD--An item of a depot overhaul/repair kit and not purchased separately. Depot kit defined as a kit that provides items required at the time of overhaul or repair.

XA--Item is not procured or stocked because the requirements for the item will result in the replacement of the next higher assembly.

XD-A support item that is not stocked. When required, item will be procured through normal supply channels.

NOTE

Cannibalization or salvage may be used as a source of supply for any items source coded above except those coded XA, XD, and aircraft support items as restricted by AR 700-42.

(2) Maintenance code. Maintenance codes are assigned to indicate the levels of maintenance authorized to USE and REPAIR support items. The maintenance codes are entered in the third and fourth positions of the Uniform SMR Code format as follows:

(a) The maintenance code entered in the third position will indicate the lowest maintenance level authorized to remove, replace, and use the support item. The maintenance code entered in the third position will indicate one of the following levels of maintenance:

<i>Code</i>	<i>Application/Explanation</i>
O	Support item is removed, replaced, used at the organizational level.

<i>Code</i>	<i>Application/Explanation</i>
F	Support item is removed, replaced, used at the direct support level.

<i>Code</i>	<i>Application/Explanation</i>
H	Support item is removed, replaced, used at the general support level.

<i>Code</i>	<i>Application/Explanation</i>
D	Support items that are removed, replaced, used at depot, mobile depot, specialized repair activity only.

(b) The maintenance code entered in the fourth position indicates whether the item is to be repaired and identifies the lowest maintenance level with the capability to perform complete repair (i.e., all authorized maintenance functions). This position will contained one of the following maintenance codes:

<i>Code</i>	<i>Application/Explanation</i>
H	The lowest maintenance level capable of complete repair of the support item is the general support level.

D-The lowest maintenance level capable of complete repair of the support item is the depot level.

Z- Nonreparable. No repair is authorized.

(3) *Recoverability code.* Recoverability codes are assigned to support items to indicate the disposition action on unserviceable items. The recoverability code is entered in the fifth position of the Uniform SMR Code format as follows:

Recoverability

<i>Codes</i>	<i>Definition</i>
--------------	-------------------

Z-Nonreparable item. When unserviceable, condemn and dispose at the level indicated in position 3.
--

H-Reparable item. When uneconomically reparable, condemn and dispose at the general support level.
--

L-Reparable item. Repair, condemnation, and disposal not authorized below depot/specialized repair activity level.
--

c. National Stock Number. Indicates the National stock number assigned to the item and will be used for requisitioning purposes.

d. Part Number. Indicates the primary number used by the manufacturer (individual, company, firm, corporation, or Government activity), which controls the design and characteristics of the item by means of its engineering drawings, specifications standards, and inspection requirements, to identify an item or range of items.

NOTE

When a stock-numbered item is requisitioned, the repair part received may have a different part number than the part being replaced.

e. Federal Supply Code for Manufacturer (FSCM). The FSCM is a 5-digit numeric code listed in SB 708-42 which is used to identify the manufacturer, distributor, or Government agency, etc.

f. Description. Indicates the Federal item name and, if required, a minimum description to identify the item. Items that are included in kits and sets are listed below the name of the kit or set with the quantity of each item in the kit or set indicated in the quantity incorporated in unit of column. When the part to be used differs between serial numbers of the same model, the effective serial numbers are shown as the last line of the description.

g. Unit of Measure (UIM). Indicates the standard of the basic quantity of the listed item as used in performing the actual maintenance function. This measure is

expressed by a two-character alphabetical abbreviation (e.g., ea, in, pr, etc.). When the unit of measure differs from the unit of issue, the lowest unit of issue that will satisfy the required units of measure will be requisitioned.

h. Quantity Incorporated in Unit. Indicates the quantity of the item used in the breakout shown on the illustration figure, which is prepared for a functional group, subfunctional group, or an assembly.

4. Special Information

The following publication pertains to the AN/TMQ-22 and its components:

T.O. 31M3-2TMQ22-2, Service Instructions, Operator, Circuit Diagram, IPB-Meteorological Measuring Set, Type AN/TMQ-22 (Aiflo Instrument Co)-433L

5. How to Locate Repair Parts

a. When National stock number or part number is unknown.

(1) *First.* Using the table of contents, determine the functional group within which the repair part belongs. This is necessary since illustrations are prepared for functional groups and listings are divided into the same groups.

(2) *Second.* Find the illustration covering the functional group to which the repair part belongs.

(3) *Third.* Identify the repair part on the illustration and note the illustration figure and item number of the repair part.

(4) *Fourth.* Using the Repair Parts Listing, find the figure and item number noted on the illustration.

b. When National stock number or part number is known.

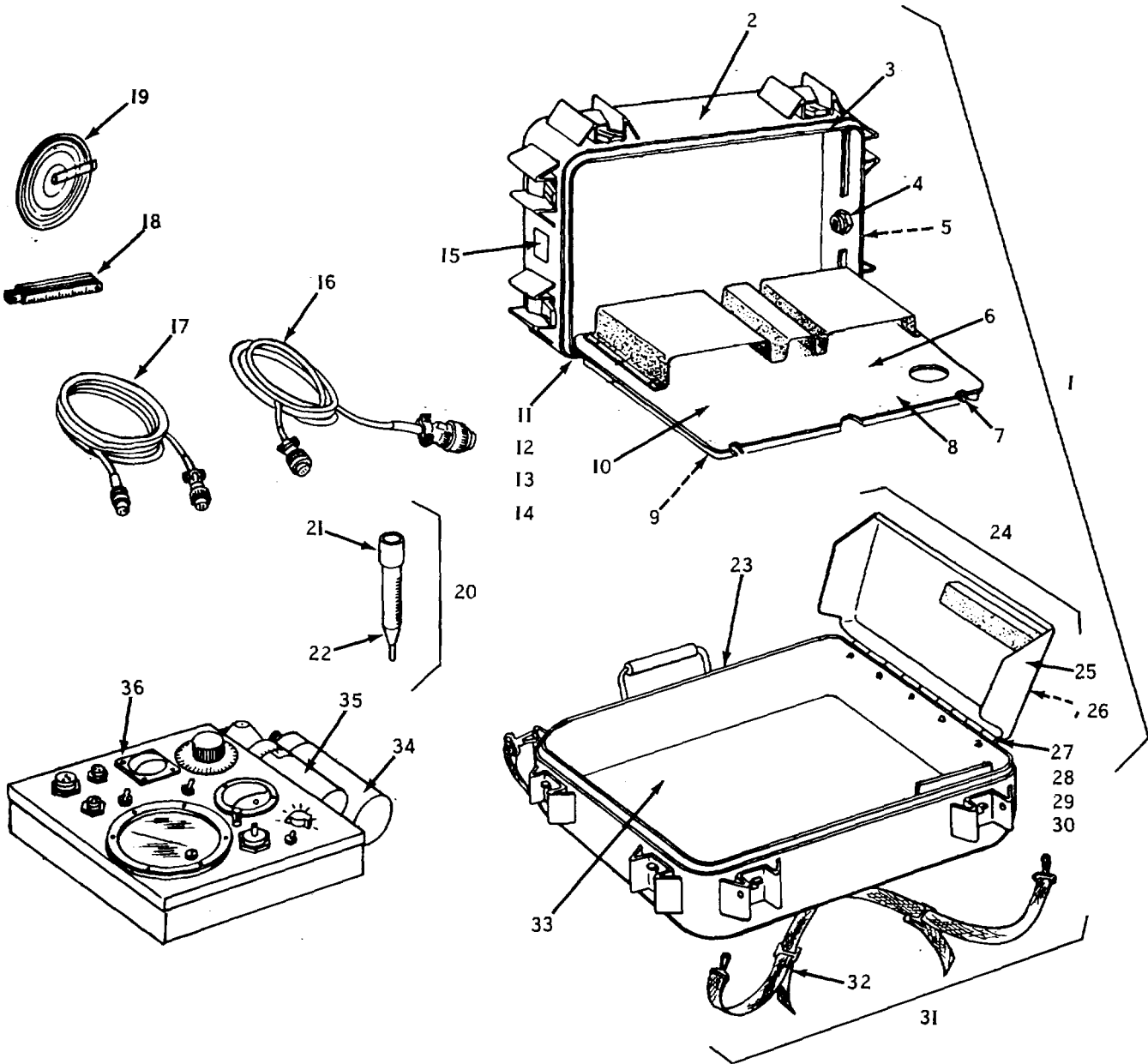
(1) *First.* Using the Index of National Stock Numbers and Part Numbers, find the pertinent National stock number or part number. This index is in ascending NIIN sequence followed by a list of part numbers in ascending alphameric sequence, cross-referenced to the illustration figure number and item number.

(2) *Second.* After finding the figure and item number, locate the figure and item number in the repair parts list.

6. Abbreviations

Not applicable.

(Next printed page is 4)



ELONZ001

Figure 1. Meteorological Measuring Set AN/TMQ-22.

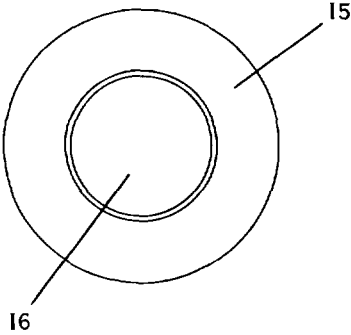
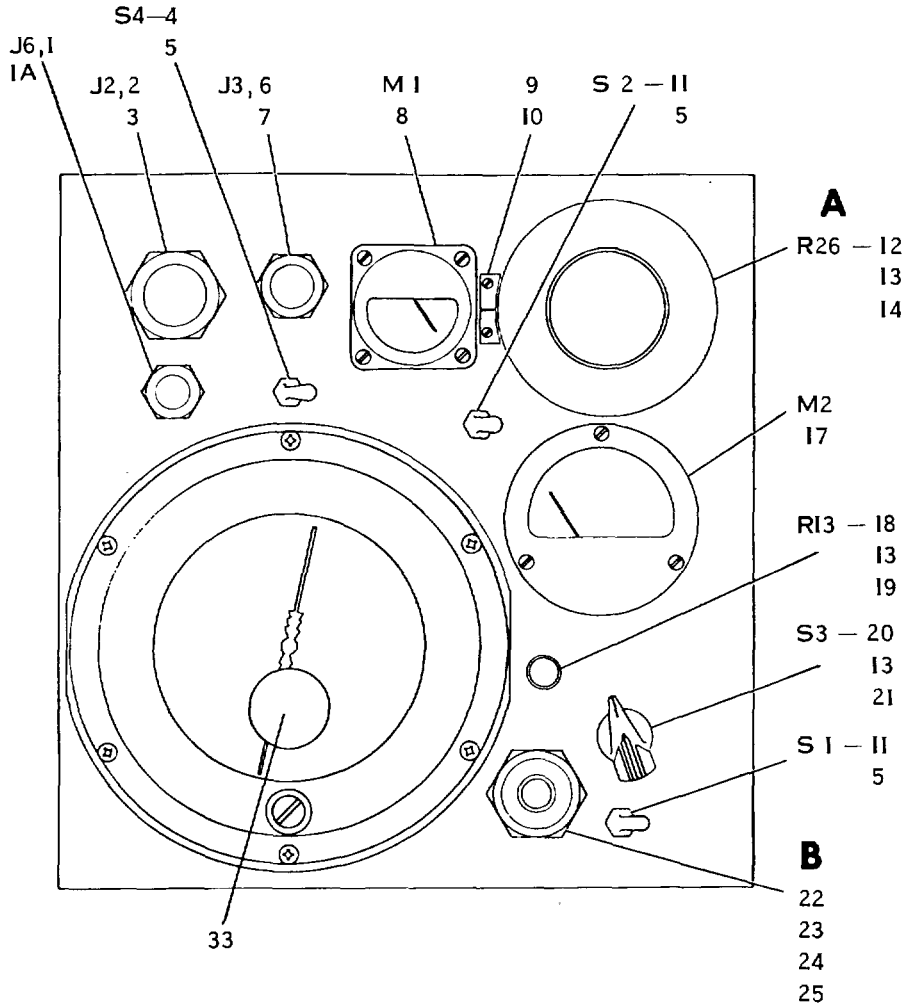
SECTION II

TM 11-6660-236-24P

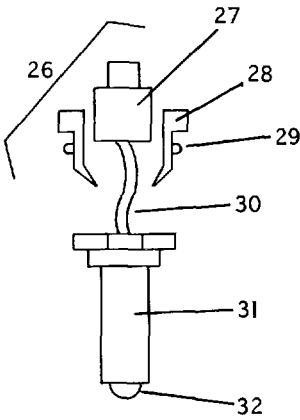
ILLUSTRATION

(a) FIG NO	(b) ITEM NO	(2) SMR CODE	(3) NSN	(4) PART NUMBER	(5) FSCM	(6) DESCRIPTION (UOC)	(7) U/M	(8) QTY
GROUP 00 METEOROLOGICAL MEASURING SET AN/TMQ-22								
1	1	PAHHH	6660-00-262-1683	SMD727801	80063	CASE, CARRYING	EA	1
1	2	XDHZZ		SMD727787	80063	CASE, UPPER HALF	EA	1
1	3	XDHZZ		SMC727786	80063	GASKET, COVER	EA	1
1	4	PAHZZ		ZSP6-037-4	06102	VALVE, RELIEF	EA	1
1	5	XDHZZ		SMB728048	80063	LABEL, CAUTION	EA	1
1	6	XDHZZ		SMD727761	80063	COVER ASSEMBLY, INNER	EA	1
1	7	XDHZZ		SMA728054	80063	FASTENER, SNAP	EA	2
1	8	XDHZZ		SMC727770	80063	PAD, SHOCK MTG	EA	1
1	9	XDHZZ		SMB728047	80063	PLATE, IDENT	EA	1
1	10	XDHZZ		SMD727762	80063	COVER, INNER	EA	1
1	11	PAHZZ	5310-00-934-9748	MS35649-244	96906	NUT, HEX	EA	5
1	12	PAHZZ	5310-00-933-8118	MS35338-135	96906	WASHER, LOCK	EA	5
1	13	PAHZZ	5305-00-0545648	MS51957-14	96906	SCREW, PAN HD	EA	5
1	14	XDHZZ		SMB727763	80063	HINGE, SHELF	EA	1
1	15	XDHZZ		SMB728050	80063	PLATE, IDENT	EA	1
1	16	PAOHH	6660-00-408-2614	SMC727871	80063	CABLE, SPECIAL-PURPOSE	EA	1
1	17	PAOHH	6660-00-197-6336	SMC727872	80063	CABLE, SPECIAL-PURPOSE	EA	1
1	18	PAOZZ	5210-00-148-6923	SMB728065	80063	GAGE, SNOW	EA	1
1	19	PAOZZ	6660-00-543-1368	CP402UM	80058	COMPUTER	EA	1
1	20	PAOHH	6660-00-197-6331	ML614-G	80058	GAGE, RAIN	EA	1
1	21	XDHZZ		SMB728012	80063	TUBE, RAIN GAGE	EA	1
1	22	PAHZZ	5315-00-357-0602	SMB728016	80063	ROD, RAIN GAGE	EA	1
1	23	XDHZZ		SMD727789	80063	CASE, LOWER HALF	EA	1
1	24	PAHZZ	7520-00-622-7452	SMC727803	80063	SHELF, WRITING	EA	1
1	25	XAHZZ		SMC727800	80063	SHELF, MRITENG	EA	1
1	26	XAHZZ		SMA728055	80063	CLIP, SPRING PAD	EA	1
1	27	PAHZZ	5305-00-054-5648	MS51957-14	96906	SCREW, PAN HD	EA	5
1	28	PAHZZ	5310-00-933-8118	MS35338-135	96906	VASHER, LOCK	EA	5
1	29	PAHZZ	5310-00-934-9748	MS35649-244	96906	RUT, HEX	EA	5
1	30	XAHZZ		SB1727804	80063	HINGE, SHELF	EA	1
1	31	PAOHH	6660-00-348-8466	SMC728010	80063	STRAP, CARRYING	EA	1
1	32	XDHZZ		SMC728010-1	80063	STRAP, CARRYING	EA	2
1	33	PBHZZ	6660-00-137-9087	SMD727198,	80063	PAD, SHOCK MTG	EA	1
1	34	PBODL	6660-00-197-6333	SMD727821	80063	DETECTOR, NIND	EA	1
1	35	PBODL	6660-00-197-6332	ML616TMQ22	80058	SENSOR, TEMP-DEW	EA	1
1	36	PBODL	6660-00-262-1682	SMD728021	80063	PANEL.MONITOR	EA	1

5/(6 blank)



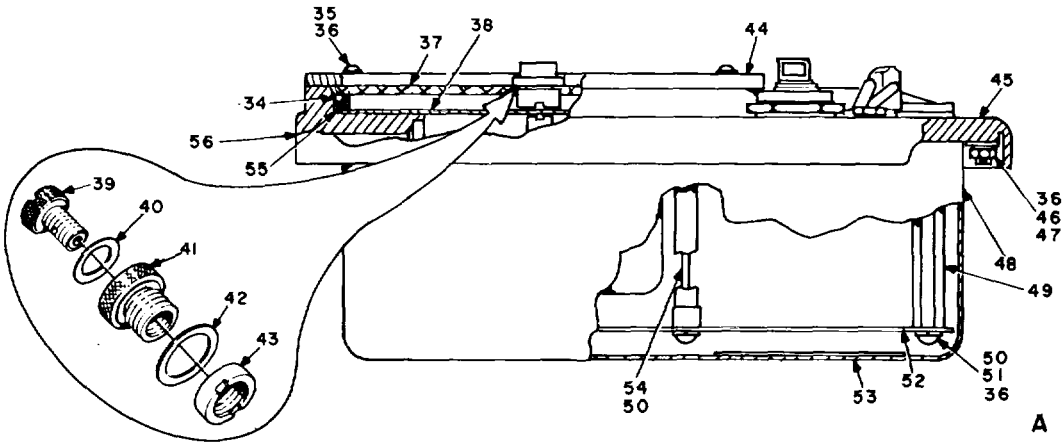
A



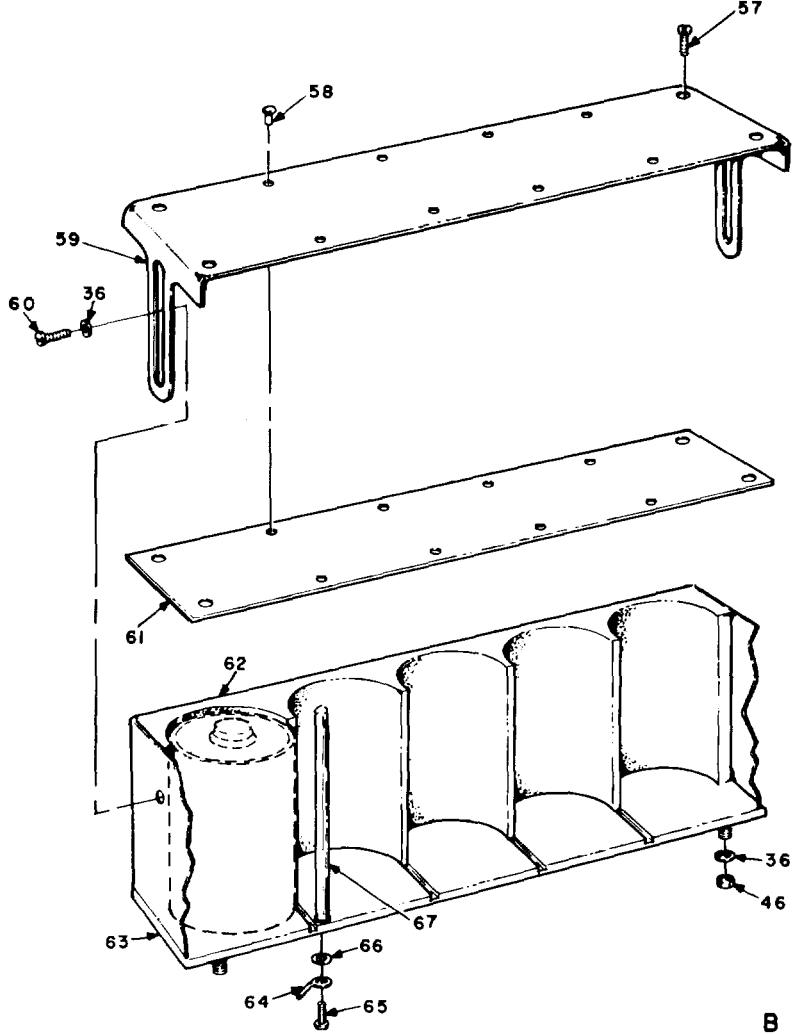
B

ELONZ002

Figure 2(1). Panel assembly (Sheet 1 of 2).



A



B

ELON2003

Figure 2(2). Panel assembly (Sheet 2 of 2).

**SECTION II
ILLUSTRATION**

(a) FIG NO	(b) ITEM NO	(2) SMR CODE	(3) NSN	(4) PART NUMBER	(5) FSCM	(6) DESCRIPTION (UOC)	(7) U/M	(8) QTY
GROUP 01 PANEL ASSEMBLY								
2	1	XDHZZ	5935-00-755-3425	PT07A8-3S	77820	CONNECTOR, RECPT	EA	1
2	1A	XDHZZ		SMB728022-3	80063	GASKET, CONNECTR	EA	4
2	2	PAHZZ	5935-00-899-5878	PT07A14-195	77820	CONNECTOR, RECPT	EA	1
2	3	PAHZZ	5330-00-287-8929	SMB728022-1	80063	GASKET, CONNECTR	EA	1
2	4	PAHZZ	5930-00-063-6820	7201	09353	SWITCH, SUBMINI	EA	1
2	5	PAHZZ	5930-00-892-9362	N5030L	97539	SEAL, SHAFT NUT	EA	3
2	6	PAHZZ	5935-00-725-1479	PT07A10-65	77820	CONNECTOR, RECPT	EA	1
2	7	PAHZZ	5330-00-285-5342	SMB728022-2	80063	GASKET, CONNECTR	EA	1
2	8	PAHZZ	6625-00-341-5250	SMB728023	80063	METER, NULL	EA	1
2	9	XDHZZ		SMA727992	80063	PLATE, INDICATOR	EA	1
2	10	PAHZZ	5305-00-054-5637	MS51957-3	96906	SCR MACH PAN HD	EA	2
2	11	PAHZZ	5930-00-050-1198	7101	09353	SWITCH, TOGGLE	EA	2
2	12	XDHZZ		1702	11534	PCT, W W PRCN	EA	1
2	13	PAHZZ	5340-00-855-1259	N9030X1-4	97539	SEAL, SHAFT NUT	EA	3
2	14	PAHZZ	5355-00-355-7865	SMB728025	80063	DIAL ASSY	EA	1
2	15	PAOZZ	5355-00-355-7866	SMB728033	80063	PLATE, DIAL	EA	1
2	16	PAOZZ	5355-00-357-0603	SMB728034	80063	KNOB, MODIFIED	EA	1
2	17	PAHZZ	6625-00-341-5219	SMB728026	800631	METER, DIR/SPEED	EA	1
2	18	XDHZZ		SMB728028	80063	PCT, W W PRCN	EA	1
2	19	PAOZZ	5355-00-274-8035	KN500B	951465	KNOB, POT	EA	1
2	20	PAHZZ	5930-00-357-0796	SMB728027	06102	SWITCH ROTARY	EA	1
2	21	XDOZZ		2300A	06102	KNOB, SWITCH	EA	1
2	22	PAHZZ	6660-00-441-8969	SMC728029	80063	HOUSING, LAMP	EA	1
2	23	PAHZZ	5330-00-351-2614	SMB728030	80063	GASKET, LAMP	EA	1
2	24	XDHZZ		AN3066-10	81352	NUT, HEX	EA	1
2	25	PAOZZ	6240-00-683-0560	345	71744	LAMP, INCAND	EA	1
2	26	XAHHZ		SMB728035	80063	HOUSING, SUBASSY	EA	1
2	27	PAHZZ	6210-00-660-8858	4-1930-2900-201	72619	SHIELD, LAMP	EA	1
2	28	PAHZZ	6250-00-324-4966	SMB728040	80063	HOUSING, LAMP	EA	1
2	29	PAHZZ	5330-00-248-3942	MS29513-017	96906	PACKING, PREFMD	EA	1
2	30	PAHZZ	6660-00-345-8998	SMB728041	80063	CORD, RETRACTILE	EA	1
2	31	XAHHZ		SMB728036	80063	HOUSING, SUBASSY	EA	1
2	32	PAHZZ	5325-00-263-6632	MS35489-6	96906	GROMMET	EA	1
2	33	XDHZZ		SMA727778	80063	LABEL, VALVE	EA	1
2	34	PAHZZ	5330-00-527-8116	MS29513-252	96906	PACKING, PREFND	EA	1
2	35	PAHZZ	5305-00-054-6654	MS51957-30	96906	SCREW PAN HD	EA	6
2	36	PAHZZ	5310-00-929-6395	MS35338-136	96906	WASHER, LOCK	EA	20
2	37	PAHZZ	5355-00-355-7859	SMB727934	80063	WINDOW, DIAL	EA	1
2	38	PBHDL	6660-00-197-6334	SMD727950	80063	BAROMETER	EA	1

**SECTION II
ILLUSTRATION**

(a) FIG NO	(b) ITEM NO	(2) SMR CODE	(3) NSN	(4) PART NUMBER	(5) FSCM	(6) DESCRIPTION (UOC)	(7) U/M	(8) QTY
2	39	XDHZZ	5305-00-485-5350	SMB727182	80063	SCREW, VALVE	EA	1
2	40	PAHZZ		MS28775-011	96966	PACKING, PREFMD	EA	1
2	41	PAHZZ	6660-00-345-9191	SMB727834	80063	HOUSING, VALVE	EA	1
2	42	PAHZZ		MS28775-013	96906	PACKING, PREFMD	EA	1
2	43	PAHZZ	5310-00-353-5357	SMB727842	80063	NUT, VALVE	EA	1
2	44	PAHZZ	5365-00-132-4407	SMB727870	80063	RING.RETAINING	EA	1
2	45	XDHZZ		SMD1727807	80063	HOUSING, PANEL	EA	1
2	46	PAHZZ	5310-00-934-9761	MS35649-264	96906	NUT, FEX	EA	20
2	47	PAHZZ	5310-00-722-5998	MS15795-805	96906	WASHER, FLAT	EA	21
2	48	PAHZZ	6660-00-345-9056	SMD727806	80063	HOUSING,PANEL	EA	1
2	49	PAHZZ	6660-00-345-9193	SMB727998-1	80063	PCST, NTG	EA	4
2	50	PAHZZ	5310-00-209-1366	MS35335-58	96906	WASHER, LOCK	EA	6
2	51	PAHZZ	5305-00-054-6651	MS51957-27	96906	SCREN, PAN HD	EA	6
2	52	PAHOL	6660-00-348-8477	SMD727997	80063	PCB, ASSY	EA	1
2	53	XDHZZ		SMC728051	80063	LABEL, DIAGRAM	EA	1
2	54	PAHZZ	6660-00-355-7851	SMB727998-2	80063	POST MTG	EA	2
2	55	PAHZZ	5365-00-389-0352	SMB727869	80063	SPACER, SEAL	EA	1
2	56	PAHZZ	5330-00-351-2611	SMC728011	80063	GASKET, PANEL	EA	1
2	57	PAHZZ	5305-00-363-8473	SMB728006	80063	SCREW, CAPTIVE	EA	6
2	58	PAHZZ	5320-00-234-1557	MS20426A3-6	96906	RIVET SOL CTSK	EA	6
2	59	PAHZZ	6660-00-342-9572	SMC728005	80063	COVER ASSY	EA	1
2	60	PAHZZ	5305-00-054-6649	MS51957-25	96906	SCR MACH PAN HD	EA	2
2	61	PAHZZ	5330-00-348-8507	SMC728003	80063	GASKET, BAT CASE	EA	1
2	62	XDHZZ		SMC728008	80063	SPACER, BATTERY	EA	2
2	63	PAHZZ	5999-00-372-4527	SMB728007	80063	PLATE, CCNTACT	EA	1
2	64	PAHZZ		523H6	79963	TERMINAL, LUG	EA	3
2	65	PAHZZ	5305-00-054-6655	MS51957-31	96906	SCREW, PAN HD	EA	5
2	66	PAHZZ	5310-00-880-5976	MS15795-806	96906	WASHER, FLAT	EA	5
2	67	PAHZZ	5340-00-432-0237	SMB727811	80063	CONTACT, ELEC	EA	1

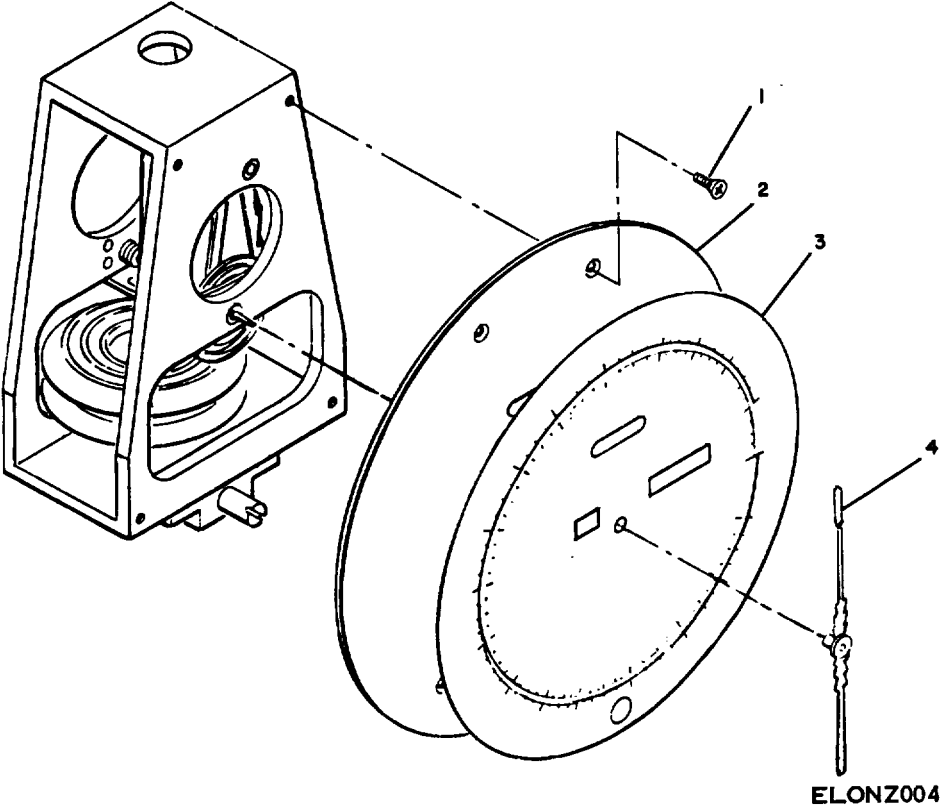
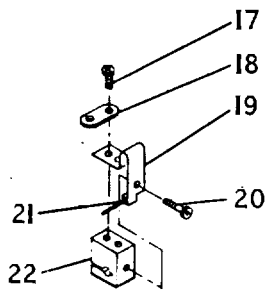
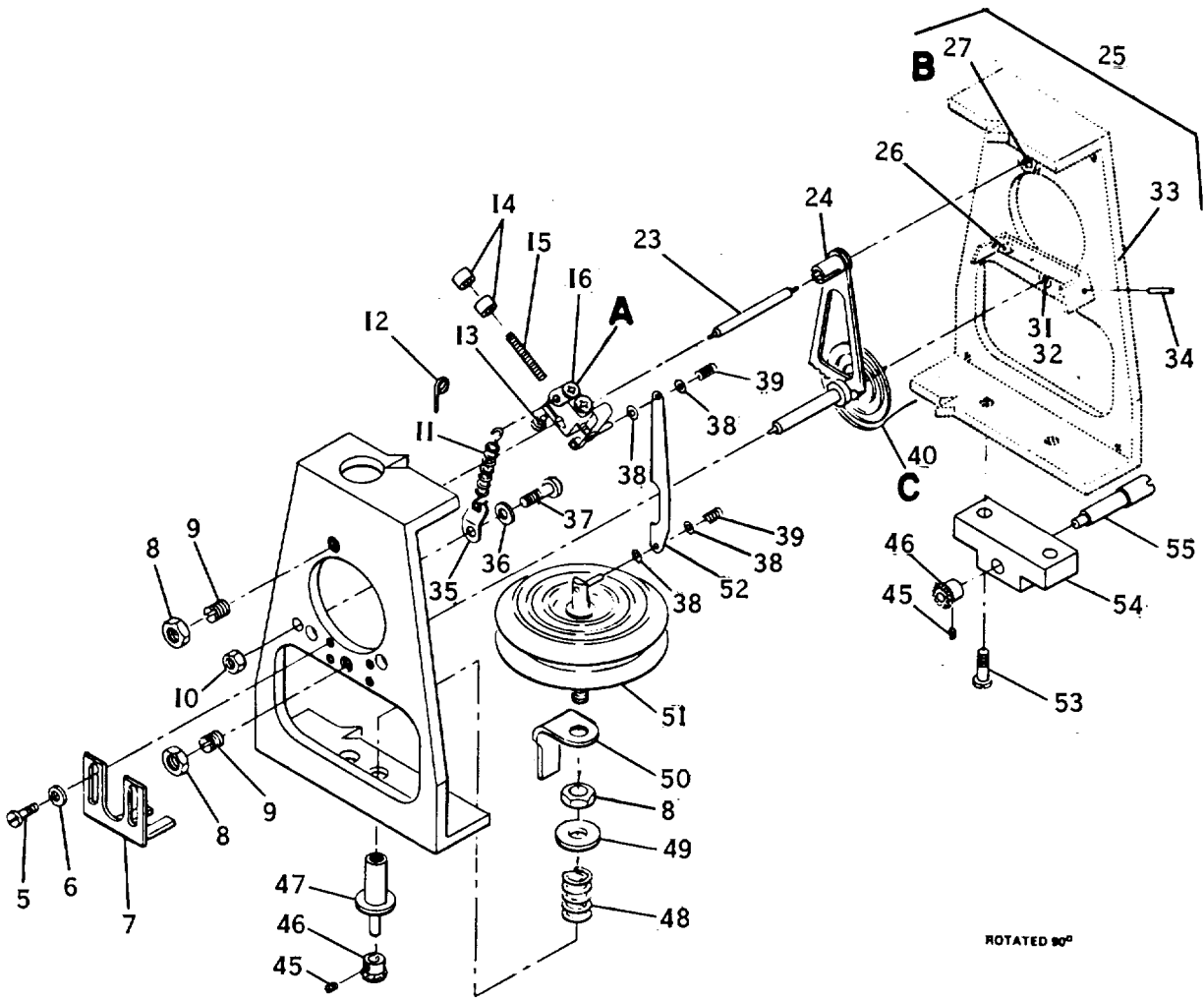
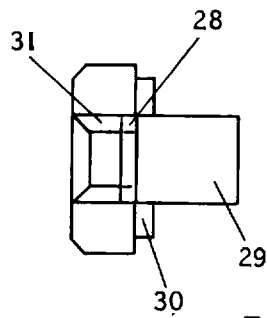


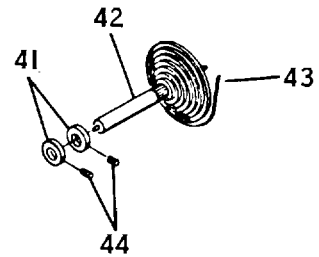
Figure 3(1). Barometer (Sheet 1 o 2).



A



B



C

ELONZ005

Figure 3(2). Barometer (Sheet 2 of 2).

SECTION II
ILLUSTRATION

(a) FIG NO	(b) ITEM NO	(2) SMR CODE	(3) NSN	(4) PART NUMBER	(5) FSCM	(6) DESCRIPTION (UOC)	(7) U/M	(8) QTY
GROUP 0101 BAROMETER								
3	1	PADZZ	5305-00-766-2422	MS51959-1	96906	SCREW, FLAT HD	EA	4
3	2	XDDZZ		SMB727933	80063	PLATE, OIAL	EA	1
3	3	PADZZ	5355-00-355-7868	SMC727952	80063	DIAL, SCALE	EA	1
3	4	PADZZ	5355-00-363-8462	SMB1727889	80063	POINTER, ASSY	EA	1
3	5	XDDZZ		MS25271-13	96906	SCREW, FIL HD	EA	4
3	6	PADZZ	5310-00-351-2616	SMB727923	80063	WASHER, FL SPCL	EA	4
3	7	XDDZZ		SMC727928	80063	BRACKET DIAPH	EA	1
3	8	PADZZ	5310-00-355-7857	SMB727902	80063	NUT, HEX SPCL	EA	3
3	9	KDDZZ		SMB727895	80063	SCREW, JEWELASSY	EA	1
PART OP KITS P/N SMA727965, SMA727966								
3	10	PADZZ	5310-00-934-9761	MS35649-264	96906	NUT, HEX	EA	1
3	11	PADZZ	5360-00-366-9122	SMB127963	80063	SPRING, EXP	EA	1
3	12	XDDZZ		SMB727960	80063	RETAINER, SPRING	EA	1
3	13	XDDZZ		MS25271-3	96906	SCREW FIL HD	EA	1
3	14	XDOZZ		SMB72i964	80063	COUNTERWEIGHT	EA	2
3	15	PADZZ	5305-00-715-1199	MS51981-72	96906	SET SCREW, HEXSOC	EA	1
3	16	XDDZZ		SMC727929	80063	BLOCK, ADJUSTING	EA	1
3	17	PADZZ	5305-00-059-8226	MS35214-1	96906	SCREW, FIL HO	EA	2
3	18	PADZZ	5940-00-259-9057	341-093	79963	TERMINAL, LUG	EA	1
3	19	PADZZ	5360-00-363-8504	SMB727918	80063	SPRING, FLAT	EA	1
3	20	PADZZ	5305-00-059-8229	MS35214-4	96906	SCREW, PAN HO	EA	1
3	21	PADZZ	5315-00-355-7855	SMB727919	06102	PIN STR HDLS	EA	2
3	22	XDDZZ		SMB727917	80063	BLOCK, ADJUSTING	EA	1
3	23	KDDZZ		SMB727921	80063	SHAFT, SHLDR	EA	1
PART OF KIT P/N SMA727966								
3	24	XDDZZ		SMB727914	80063	GEAR, SECT, ASSY	EA	1
3	25	XDDZZ		SND727876	80063	FRAME, ASSY	EA	1
3	26	XDDZZ		SMB727878	80063	STOP, GEAR	EA	1
3	27	XDDZZ		SMB727958	80063	HOLDER, ASSEMBLYJEWEL	EA	1
3	28	XADZZ		SMB727881	80063	PLATE, THRUST	EA	1
3	29	XADZZ		SMB727879	80063	HOLDER, JEWEL	EA	1
3	30	PADZZ	5310-00-355-7856	SMB727880	80063	WASHER, CURVED	EA	1
3	31	XADZZ		SM8727882	80063	JEWEL, BRG ASSY	EA	4
PART OF KITS P/N SMA727965, SMA727966								
3	32	PADZZ	5310-00-351-2615	SMB727884	80063	WASHER, FL SPCL	EA	1
3	33	XDDZZ		SMD727877	80063	FRAME	EA	1
3	34	PADZZ	5315-00-355-7858	SMB727922	80063	PIN, HDLS TAPER	EA	1
3	35	XDDZZ		683H144	79963	TERMINAL, LUG	EA	1
3	36	PADZZ	5310-00-929-6395	MS35338-136	96906	WASHER, LOCK	EA	1
3	37	PADZZ	5305-00-054-6651	MS51957-27	96906	SCREW, PAN HO	EA	1
3	38	PADZZ	5310-00-363-8470	SMB727911	80063	WASHER, CURVED	EA	4
3	39	PADZZ	5360-00-111-2306	SMB727912	80063	SPRING LINKAGE	EA	2

SECTION II
ILLUSTRATION

(a) FIG NO	(b) ITEM NO	(2) SMR CODE	(3) NSN	(4) PART NUMBER	(5) FSCM	(6) DESCRIPTION (UOC)	(7) U/M	(8) QTY
3	40	XDDZZ		SMB727892	80063	GEAR, PINION	EA	1
3	41	XDDZZ		SMA727888	80063	COLLAR, PINION	EA	2
3	42	KDDZZ		SMB727893	80063	GEAR, PINION PART OF KIT P/N SMA727965	EA	1
3	43	PADZZ	5360-00-391-8470	SMB727894	80063	SPRING, HAIR	EA	1
3	44	PADZZ	5305-00-207-4417	MS51023-1	96906	SETSCREW, HEXSOC	EA	2
3	45	XDDZZ		SMA727925	80063	SETSCREW, HEXSOC	EA	2
3	46	XDDZZ		SMB712196	80063	GEAR, BEVEL	EA	2
3	47	XDDZZ		SMB727885	80063	SHAFT, SHLDR	EA	1
3	48	PADZZ	5360-00-480-2692	SMB8727897	80063	SPRING, HLEXT	EA	1
3	49	PADZZ	5310-00-353-5356	SMB727962	06102	WASHER FL SPCL	EA	1
3	50	XDDZZ		SM8727913	80063	ANGLE, DIAPHRAGM	EA	1
3	51	PADZZ	6660-00-475-8799	SMB727898	80063	DIAPHRAGM	EA	1
3	52	PADZZ	6660-00-441-8958	SMB727910	80063	ARM, LINKAGE	EA	1
3	53	PADZZ	5305-00-637-1125	MS3521L4-29	96906	SCREW PAN HD	EA	2
3	54	XDDZZ		SMB727932	80063	BRACKET, SHAFT	EA	1
3	55	XDDZZ		SMB727931	80063	SHAFT, SHLDR	EA	1
3		PADZZ	6660-00-441-8549	SMA727965	80063	KIT, PINION	EA	1
3	9					SCREW & JEL ASSY	EA	1
3	31					JEWEL BRG ASSY	EA	4
3	42					GEAR, PINION	EA	1
3		PADZZ	6660-00-138-7599	SMA727966	80063	KIT, SHAFT	EA	1
3	9					SCREW & JEWEL ASSY	EA	1
3	23					SHAFT, SHLDR	EA	1
3	31					JEWEL BRG ASSY	EA	1

14/(15 blank)

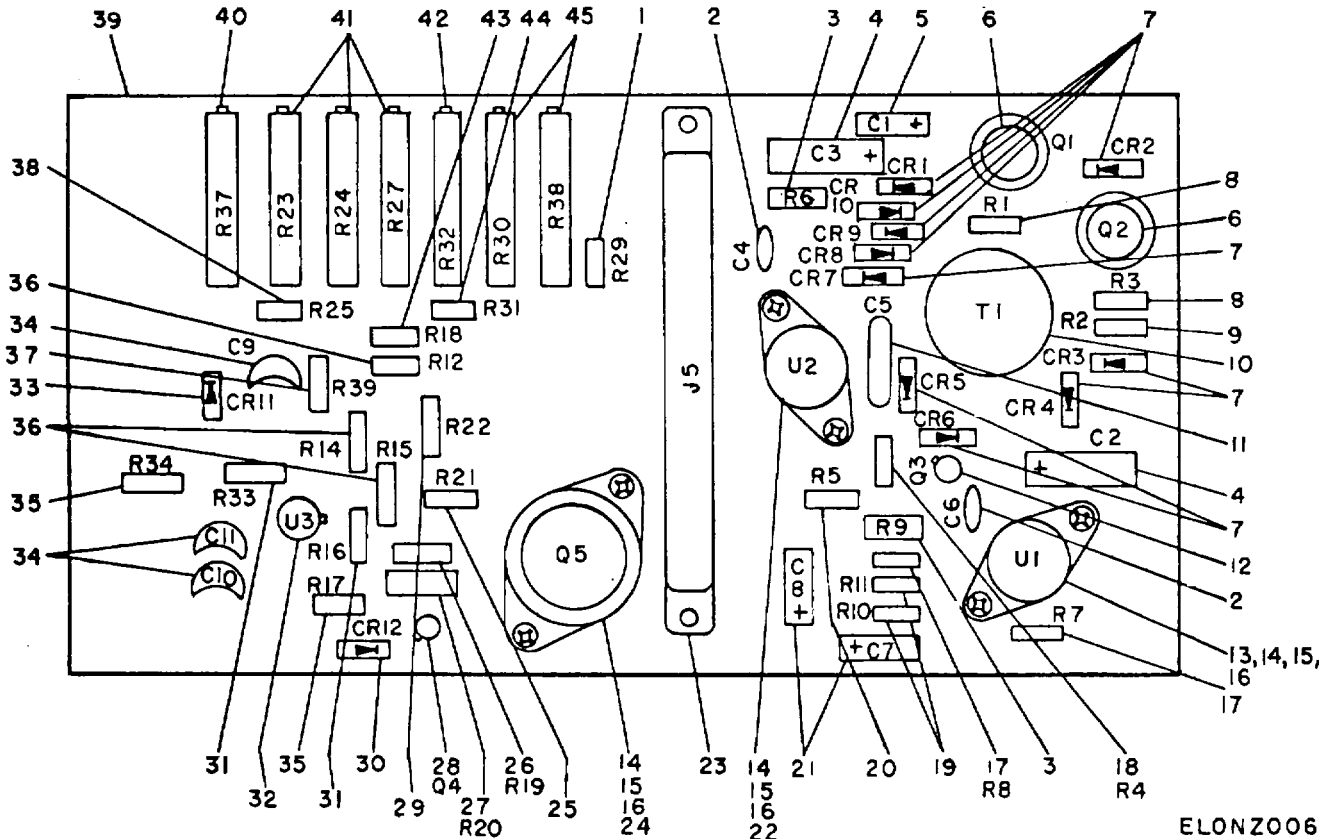


Figure 4. Printed circuit board assembly.

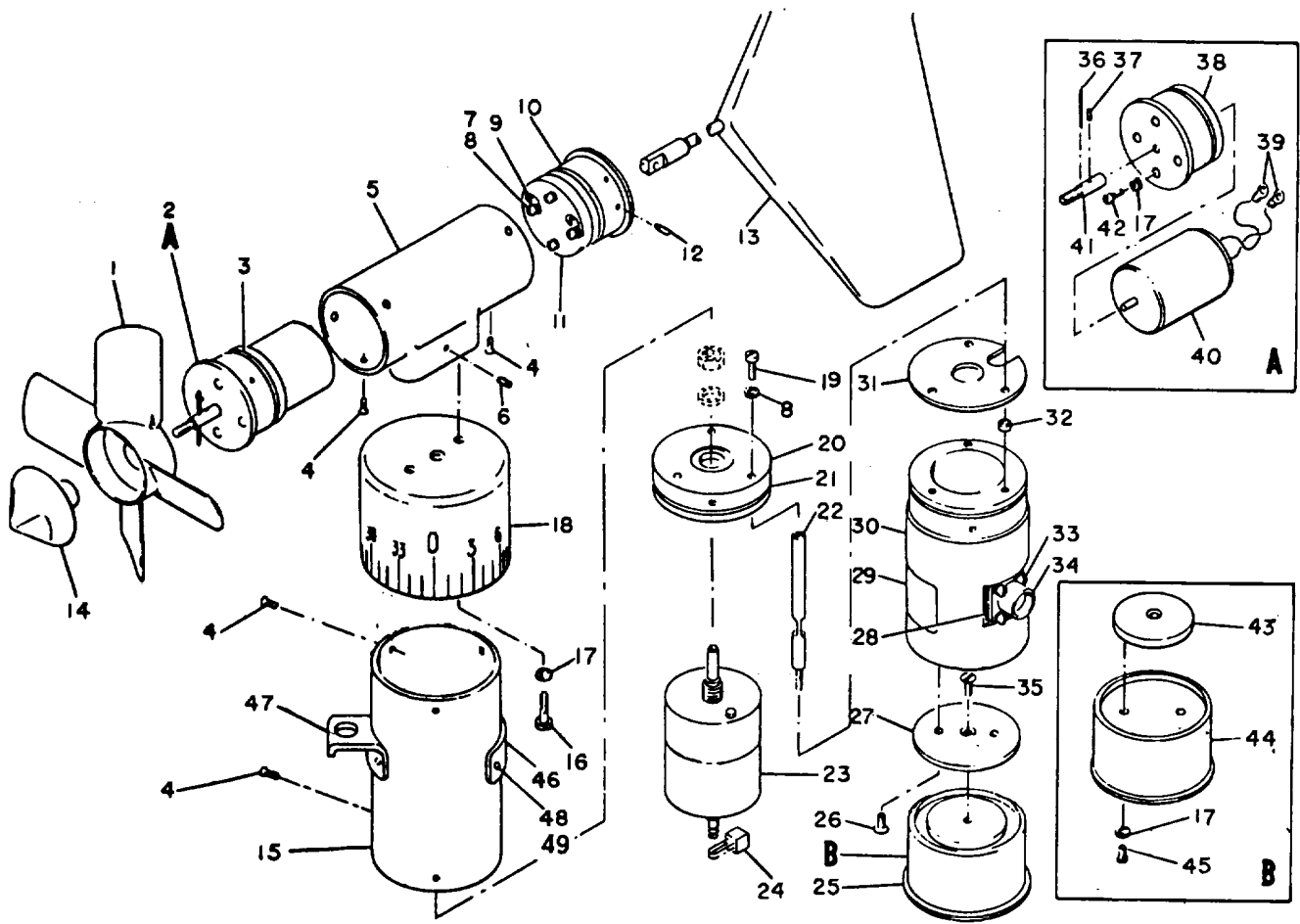
SECTION II
ILLUSTRATION

(a) FIG NO	(b) ITEM NO	(2) SMR CODE	(3) NSN	(4) PART NUMBER	(5) FSCM	(6) DESCRIPTION (UOC)	(7) U/M	(8) QTY
GROUP 0102 PRINTED CIRCUIT BOARD ASSEMBLY								
4	1	PADZZ		RN55C1003F	81349	RES, FXD COMP	EA	1
4	2	PADZZ		5GAD10	26957	CAP, FXD CER	EA	2
4	3	PAOZ	5905-00-111-4852	RCR20G2R7JS	81349	RES, FXD COMP	EA	2
4	4	PADZZ		CS138E476K	81349	CAP, FXD ELCTLT	EA	2
4	5	PADZZ	5910-00-783-9403	CS138D226K	81349	CAP, FXD ELCTLT	EA	1
4	6	PADZZ		2N4236	81349	TRANSISTOR	EA	2
4	7	PADZZ	5961-00-669-6884	JAN1N277	81349	SEMICOND.DIODE	EA	10
4	8	PADZZ	5905-00-766-8221	RN55D21R5F	81349	RES, FXD FILM	EA	2
4	9	PADZZ	5905-00-936-7548	RN55C3830F	81349	RES, FXD FILM	EA	1
4	10	PADZZ		7888	81564	TRANSFORMER PWR	EA	1
4	11	PADZZ		TGP10	26997	CAP, FXD CER	EA	1
4	12	PADZZ	5961-00-842-6937	JAN2N706	81349	TRANSISTOR	EA	1
4	13	PADZZ		MC1569R	16333	IC, VOLT PEG	EA	1
4	14	PADZZ	5305-00-054-5646	MS51957-12	96906	SCREW, PAN HD	EA	4
4	15	PADZZ	5310-00-933-8118	MS35338-135	96906	WASHER, LOCK	EA	6
4	16	PADZZ	5310-00-934-9748	MS35649-244	96906	NUT , EX	EA	6
4	17	PADZZ	5905-00-982-0478	RN55CS250F	81349	RES, FXD FILM	EA	2
4	18	PADZZ	5905-00-955-0171	RN55C6810F	81349	RES, FXD FILM	EA	1
4	19	PADZZ	5905-00-975-1653	RN55C3161F	81349	RES, FXD FILM	EA	2
4	20	PADZZ	5905-00-992-5341	RN55C1332F	81349	RES, FXD FILM	EA	1
4	21	PADZZ	5910-00-782-1973	CS13BE106K	81349	CAP, FXD ELCTLT	EA	2
4	22	PADZZ		MC1563R	16333	IC, VOLT REG	EA	1
4	23	PADZZ	5935-00-762-1053	M21097-1-136	81349	CONNECTOR, PCB	EA	1
4	24	PADZZ		JAN2N297	81349	TRANSISTOR	EA	1
4	25	PADZZ	5905-00-118-4559	RCR07G333JS	81349	RES, FXD CONP	EA	1
4	26	PADZZ	5905-00-119-8812	RCR07G121JS	81349	RES, FXD CONP	EA	1
4	27	PADZZ	5905-00-141-1176	RCR20G5R6JS	81349	RES, FXD COMP	EA	1
4	28	PADZZ	5961-00-226-8584	JAN2N2222	81349	TRANSISTOR	EA	1
4	29	PADZZ	5905-00-982-0937	RN55C1002F	81349	RES, FXD FILM	EA	1
4	30	PADZZ	5961-00-842-9864	JAN1N914	81349	SEPICOND, DIOOE	EA	2
4	31	PADZZ	5905-00-974-5526	RN55C1962F	81349	RES, FXD FILM	EA	2
4	32	PADZZ	5905-00-905-2787	RN55C4640F	81349	RES, FXD FILM	EA	1
4	33	PADZZ		MC1741G	16333	IC, CPNL AMP	EA	1
4	34	PADZZ		5GAS10	26957	CAP, FXD CER	EA	3
4	35	PADZZ		RN60C5113F	81349	RES, FXD FILM	EA	1
4	36	PADZZ	5905-00-902-0339	RN55C1961F	811349	RES, FXD FILM	EA	3
4	37	PADZZ	5905-00-964-0395	RN55C2741F	81349	RES, FXD FILM	EA	1
4	38	PADZZ	5905-00-027-0538	RN55C2611F	81349	RES, FXD FILM	EA	1
4	39	XADZZ		SMC727996	80063	PC BOARD	EA	1

**SECTION II
ILLUSTRATION**

(a) FIG NO	(b) ITEM NO	(2) SMR CODE	(3) NSN	(4) PART NUMBER	(5) FSCM	(6) DESCRIPTION (UOC)	(7) U/M	(8) QTY
4	40	PADZZ	5905-00-339-7488	40Y202	02111	RES, VAR W W	EA	1
4	41	PADZZ	5905-00-359-4221	40Y201	02111	RES, VAR W W	EA	3
4	42	PADZZ	5905-00-339-7487	40Y203	02111	RES, VAR W W	EA	1'
4	43	PADZZ		RN55C1783F	81349	RES FXD FILM	EA	2
4	44	PADZZ		RN55C1913F	81349	RES, FXD FILM	EA	1
4	45	PADZZ		40Y104	02111I	RES, VAR W W	EA	2

18/(19 blank)



ELONZ007

Figure 5. Wind detector.

SECTION II
ILLUSTRATION

(a) FIG NO	(b) ITEM NO	(2) SMR CODE	(3) NSN	(4) PART NUMBER	(5) FSCM	(6) DESCRIPTION (UOC)	(7) U/M	(8) QTY
5	1	PAOZZ	6660-00-345-9262	SMC727839	80063	PROPELLER, GEN	EA	1
5	2	PADDL	5905-00-124-9941	SMB727836	80063	GENERATOR ASSY	EA	1
5	3	PADZZ	5330-00-250-0236	MS29513-024	96906	PACKING, PREFMD	EA	2
5	4	PADZZ	5305-00-727-8833	MS51959-3	96906	SCREW, FLAT HD	EA	12
5	5	XDDZZ		SMB727843	80063	HOUSING, GEN	EA	1
5	6	PADZZ	5305-00-980-3934	MS180641	96906	SSCR, HEX SOC	EA	1
5	7	PADZZ	5305-00-054-5647	MS51957-13	96906	SCR MACH PAN HD	EA	1
5	8	PADZZ	5310-00-928-2690	MS35338-134	96906	WASHER, LOCK	EA	10
5	9	XDDZZ		690	06102	LUG, TERMINAL	EA	2
5	10	XDDZZ		SMB727823	80063	CAP, RUDDER ASSY	EA	1
5	11	XDDZZ		SMB727796	80063	INSULATOR, TERNINAL	EA	1
5	12	XDDZZ		SSB50N	01226	BALL PLUNGER	EA	1
5	13	PAOZZ	6660-00-361-0372	SMC727822	00063	RIDDER ASSY	EA	1
5	14	PAOZZ	6660-00-355-7854	SMB727838	80063	HUB, SPINNER	EA	1
5	15	XDDZZ		SMB72785L	80063	HOUSING, IND	EA	1
5	16	PADZZ	5305-00-054-5648	MS51957-14	96906	SCREW, PAN HD	EA	2
5	17	PADZZ	5310-00-933-8118	MS35338-135	96906	WASER, LOCK	EA	5
5	18	PADZZ	6660-00-348-8467	SMB6727825	80063	INDICATOR, DIR	EA	1
5	19	PADZZ	5305-00-05S-5642	MS51957-8	96906	SCREW, PAN HD	EA	3
5	20	XDDZZ		SMB727824	80063	POUSING, POT	EA	1
5	21	PADZZ	5330-00-841-2366	MS29513-030	96906	PACKING, PREFMD	EA	2
5	22	XDDZZ		SMB727828	80063	PCST, MOUNTING	EA	3
5	23	PADZZ	6660-00-345-9273	SMB727826	80063	POT ASSY	EA	1
5	24	PADZZ	5999-00-341-5298	SMB727827	80063	CONTACT.ELEC	EA	1
5	25	PADZZ	6605-00-111-6565	SMB727832	80063	COMPASS, ASSY	EA	1
5	26	PADZZ	5305-00-770-2579	MS51959-15	96906	SCREW, FLAT HD	EA	2
5	27	XDDZZ		SMB727831	80063	PLATE, COMPASS	EA	1
5	28	PADZZ	5330-00-372-4182	SMB727830	80063	GASKET, CONN	EA	1
5	29	XDDZZ		SMB728045	80063	PLATE, IDENT	EA	1
5	30	XDDZZ		SMC727833	80063	HOUSING, CONN	EA	1
5	31	XDDZZ		SMB727835	80063	PLATE, CONTACT	EA	1
5	32	XDDZZ		SMB727829	80063	SPACER POST MTG	EA	3
5	33	PADZZ	5305-00-054-5649	MS51957-15	96906	SCREW, PAN HD	EA	4
5	34	PADZZ	5935-00-901-5782	PT02A10-6P	77820	CONNECTOR, RECPT	EA	1
5	35	PADZZ	5305-00-770-2533	MS51959-13	96906	SCREIW, FLAT HD	EA	1
5	36	PADZZ		MS171500	96906	PIN, SPRING	EA	1
5	37	PADZZ	5305-00-321-2318	2-56UNC2AX1-16	06102	SSCR, HEX SOC	EA	1
5	38	XDDZZ		SMB727837	80063	CAP, GEN MTG	EA	1
5	39	XDDZZ		690	06102	LUG, TERMINAL	EA	2

**SECTION II
ILLUSTRATION**

(a) FIG NO	(b) ITEM NO	(2) SMR CODE	(3) NSN	(4) PART NUMBER	(5) FSCM	(6) DESCRIPTION (UOC)	(7) U/M	(8) QTY
5	40	PADZZ	6105-00-306-9501	26PC11-213	50778	MOTOR, DC	EA	1
5	41	PADZZ	6660-00-345-9269	SMB727851	80063	SHAFT;EXT GEN	EA	1
5	42	PADZZ	5305-00-941-3551	MS35275-213	96906	SCREW MACH FIL	EA	3
5	43	XADZZ		SMB727855	80063	PLATE, COMPASS	EA	1
5	44	XADZZ		SMB727856	80063	COMPASS, MAG MOD	EA	1
5	45	PADZZ	5305-00-054-5637	MS51957-3	96906	SCREW, PAN HD	EA	2
5	46	XDDZZ		SMB727850	80063	PLATE INDICATOR	EA	1
5	47	XDDZZ		SMB727857	80063	BRACKET HTG	EA	1
5	48	XDDZZ		MS35221-12	96906	SCREW	EA	4
5	49	XDDZZ		MS35337-71	96906	WASHER LOCK	EA	4

22/(23 blank)

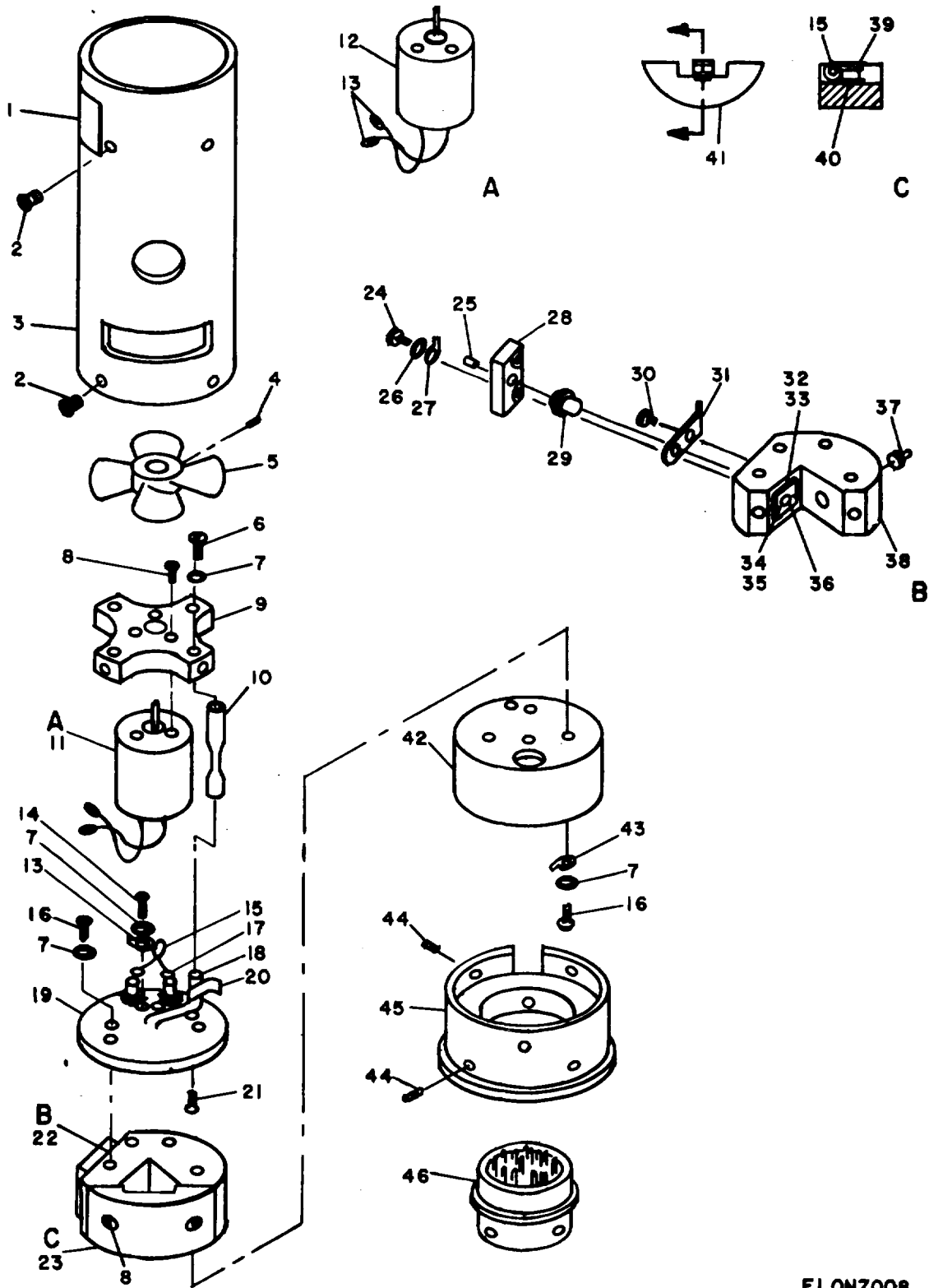


Figure 6. Temp-dew sensor.

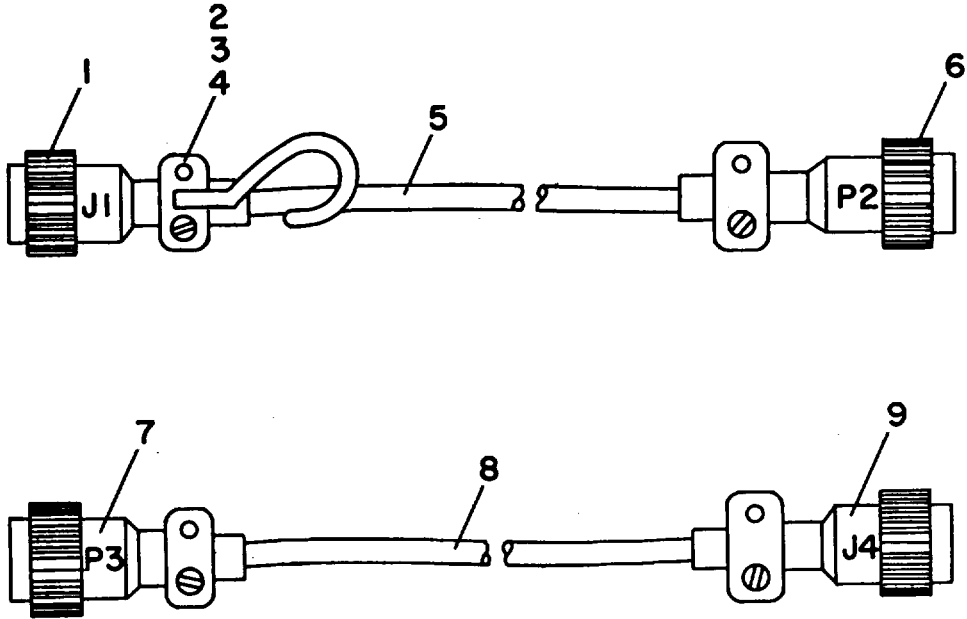
ELONZ008

SECTION II
ILLUSTRATION

(a) FIG NO	(b) ITEM NO	(2) SMR CODE	(3) NSN	(4) PART NUMBER	(5) FSCM	(6) DESCRIPTION (UOC)	(7) U/M	(8) QTY
6	1	XDDZZ		SMN8728046	80063	PLATE, IDENT	EA	1
6	2	PADZZ	5305-00-763-6962	MS51959-27	96906	SCREW, FLAT HD	EA	7
6	3	PADZZ	6660-00-345-9221	SMB727972	80063	HOUSING, SENSOR	EA	1
6	4	PADZZ	5305-00-639-8133	MS51029-2	96906	SSCR HEX SOC	EA	2
6	5	PADZZ	4140-00-334-6240	SMB127973	80063	FAN ASSN	EA	1
6	6	PADZZ	5305-00-0545651	MS51957-17	96906	SCREW, PAN HD	EA	2
6	7	PADZZ	5310-00-929-6395	MS35338-136	96906	WASHER, LOCK	EA	4
6	8	PADZZ	5305-00-054-5647	MS51957-13	96906	SCREW, PAN HD	EA	5
6	9	XDDZZ		SMB72797S	80063	PLATE, MOTOR MTG	EA	1
6	10	XDDZZ		SMB727977	80063	POST, PLATE MTG	EA	2
6	11	XDDDL		SMB727981-2	80063	MOTOR DC FAN	EA	1
6	12	PADZZ	6105-00-306-9501	26PC11-213-8	50778	MOTOR, DC	EA	1
6	13	XDDZZ		690	06102	LUG, TERMINAL	EA	2
6	14	PADZZ	5305-00-054-5646	MS51957-12	96906	SCR MACH PAN HD	EA	2
6	15	XDDZZ		YS144003	97794	THERMISTOR	EA	1
6	16	PADZZ	5305-00-054-6652	MS51957-28	96906	SCREW, PAN HD	EA	4
6	17	PADZZ	5940-00-727-4588	SE099E01	81349	STANDOFF, TERM	EA	2
6	18	XDDZZ		SMB727987-2	06102	TUBE, VENT	EA	1
6	19	XDDZZ		SMB727976	06102	PLATE, POST MTG	EA	1
6	20	XDDZZ		SMD727971-1	80063	TUBING, VINYL	EA	1
6	21	PADZZ	5305-00-770-2579	MS51959-15	96906	SCREW FLAT HD	EA	2
6	22	PADZZ	5999-00-340-1319	SMC727978	06102	SENSOR, SUBASSY	EA	1
6	23	PADZZ	6660-00-345-9246	SMB727983	80063	COOLER, THERMO-ELECTRIC	EA	1
6	24	PADZZ	5305-00-054-5648	MS51957-14	96906	SCREW, PAN HD	EA	2
6	25	PADZZ	5305-00-514-0557	SMB728060	80063	SCREW, SPCL ADJ	EA	1
6	26	PADZZ	5310-00-933-8118	MS35338-135	96906	WASHER, LOCK	EA	6
6	27	XDDZZ		75H120	799631	LUG, SOLDER	EA	1
6	28	XDDZZ		SMB728057	80063	PLATE, LAMP RET	EA	1
6	29	PADZZ	6240-00-176-5648	7240	71744	LAMP, INCAND	EA	1
6	30	PADZZ	5305-00-054-5635	MS51957-1	96906	SCREW, PAN HD	EA	1
6	31	PADZZ		SMB728059	80063	CONTACT, ELEC	EA	1
6	32	XDDZZ		SMB728058	80063	PLATE, LENS RET	EA	1
6	33	PADZZ	5330-00-248-3833	MS29513-008	96906	PACKING, PREFMD	EA	1
6	34	PADZZ	5305-00-054-5637	MS51957-3	96906	SCREW, PAN HD	EA	2
6	35	PADZZ	5310-00-928-2690	MS35338-134	96906	WASHER, LOCK	EA	2
6	36	PADZZ	6660-00-363-8251	SMB728062	80063	LENS, DOUBLE-CONVEX	EA	1
6	37	PADZZ		CL907L	13911	CELL, PHCTO COND	EA	1
6	38	PADZZ	6660-00-197-6335	SMD728061	80063	BLOCK, LENS MTG	EA	1
6	39	XADZZ		SMB727986	80063	MIRROR	EA	1

**SECTION II
ILLUSTRATION**

(a) FIG NO	(b) ITEM NO	(2) SMR CODE	(3) NSN	(4) PART NUMBER	(5) FSCM	(6) DESCRIPTION (UOC)	(7) U/M	(8) QTY
6	40	XADZZ		SMB727985	80063	COOLER, THERMO-ELECTRIC	EA	1
6	41	XADZZ		SMB727984	80063	BLOCK, COOLER	EA	1
6	42	XDDZZ		SMB727979	80063	HOUSING, MTG	EA	1
6	43	XDDZZ		809H6	79963	TERMINAL, LUG	EA	1
6	44	PADZZ	5305-00-926-5595	MS18064-6	96906	SSCR, HEX SOC	EA	6
6	45	XDDZZ		SMB727980	80063	HOUSING, CONN	EA	1
6	46	PADZZ	5935-00-331-3073	SMB727981	80063	CONN RECPT MOD	EA	1



ELONZ009

Cable assemblies.

SECTION 11						TM11-6660-236-24P		
ILLUSTRATION		(2)	(3)	(4)	(5)	(6)	(7)	(8)
(a)	(b)	BAR CODE	NATIONAL STOCK NUMBER	PART NUMBER	PCNM	DESCRIPTION	U/M	QTY INC IN UNIT
FIG NO.	ITEM NO.							
						GROUP 04 CABLE ASSEMBLIES		
7	1	PAPZZ	5935-00-845-6764	PT06A14-19P	77820	CONNECTOR, PLUG	EA	1
7	2	XDFZZ		SMB728042	80063	HCCP, CABLE	EA	1
7	3	PAPZZ	5310-00-933-8119	MS35338-137	96906	WASHER, LOCK	EA	1
7	4	PAPZZ	5310-00-934-9759	MS35649-284	96906	WASHER, LOCK	EA	1
7	5	XDPZZ		SMB727873	80063	CABLE, MULTI-CONDUCTOR	EA	1
7	6	PAPZZ	5935-00-899-5876	PT07A14-19S	77820	CONNECTOR, RECPY	EA	1
7	7	PAPZZ	5935-00-818-3426	PT06A10-6P	77820	CONNECTOR, PLUG	EA	1
7	8	XDPZZ		SMB727874	80063	CABLE, MULTI-CONDUCTOR	EA	1
7	9	PAPZZ	5935-00-755-3506	PT06A10-6S	77820	CONNECTOR, RECPY	EA	1

SECTION IV

TM 11 6660-236-24P

NOTE: LATEST NATIONAL STOCK NUMBER AND PART NUMBER ASSIGNMENTS ARE INCLUDED AT END OF TEXT

NATIONAL STOCK NUMBER AND PART NUMBER INDEX					
STOCK NUMBER	FIG.	ITEM	STOCK NUMBER	FIG.	ITEM
5905-00-027-0538	4	38	6660-00-345-9269	5	41
5930-00-050-1198	2	11	666000- 345-9273	5	23
5305-00-054-5635	6	30	6660-00-348-8466	1	31
5305-00-054-5637	2	10	6660-00-348-8467	5	18
5305-00-054-5637	5	45	6660-00-348-847T	2	52
5305-00-054-5637	6	34	5330-00-348-8507	2	61
5305-00-054-5642	5	19	5330-00-351-2611	2	56
5305-00-054-5646	4	14	5330-00-351-2614	2	23
5305-00-054-5646	6	14	5310-00-351-2615	3	32
5305-00-054-5647	5	7	5310-00-351-2616	3	6
5305-00-054-5647	6	8	5310-00-353-5356	3	49
5305-00-054-5648	1	13	5310-00-353-5357	2	43
5305-00-054-5648	1	27	6660-00-355-7851	2	54
5305-00-054-5648	5	16	6660-00-355-7854	5	14
5305-00-054-5648	6	24	5315-00-355-7855	3	21
5305-00-054-5649	5	33	5310-00-355-7856	3	30
5305-00-054-5651	6	6	5310-00-355-7857	3	8
5305-00-054-6649	2	60	5315-00-355-7858	3	34
5305-00-054-6651	2	51	5355-00-355-7859	2	37
5305-00-054-6651	3	37	5355-00-355-7865	2	14
5305-00-054-6652	6	16	5355-00-355-7866	2	15
5305-00-054-6654	2	35	5355-00-355-7868	3	3
5305-00-054-6655	2	65	5315-00-357-0602	1	22
5305-00-059-8226	3	17	5355-00-357-0603	2	16
5305-00-059- 8229	3	20	5930-00-357-0796	2	20
5930-00-063-6820	2	4	5905-00-359-4221	4	41
5360-00-111-2306	3	39	6660-00-361-0372	5	13
5905-00-111-4852	4	3	6660-00-363-8251	6	36
6605-00-111-6565	5	25	5355-00-363-8462	3	4
5905-00-118-4559	4	25	5310-00-363-8470	3	38
5905-00-119-8812	4	26	5305-00-363-8473	2	57
5905-00-124-9941	5	2	5360-00-363-8504	3	19
5365-00-132-4407	2	44	5360-00-366-9122	3	11
6660-00-137-9087	1	33	5330-00-372-4182	5	28
6660-00-138-7599	3	KIT	5999-00-372-4527	2	63
5905-00-141-1176	4	27	5365-00-389-0352	2	55
5210-00-148-6923	1	18	5360-00- 391-8470	3	43
6240-00-176-5648	6	29	6660-00-408-2614	1	16
6660-00-197-6331	1	20	5340-00-432-0237	2	67
6660-00-19- 6332	1	35	6660-00-441-8949	3	KIT
6660-00-197-6333	1	34	6660-00-441-8958	3	52
6660-00-197-6334	2	38	6660-00-441-8969	2	22
6660-00-197-6335	6	38	5360-00-480-2692	3	48
6660-00-197-6336	1	17	5305-00-485-5350	2	39
5305-00-207-4417	3	44	5305-00-514-0557	6	25
5310-00-209-1366	2	50	5330-00-527-8116	2	34
5961-00-226-8584	4	28	7520-00-622-7452	1	24
5320-00-234-1557	2	58	5305-00-637-1125	3	53
5330-00-248-3833	6	33	5305-00-639-8133	6	4
5330-00-248-3842	2	29	6210-00-660-8858	2	27
5330-00-250-0236	5	3	5961-00-669-6884	4	7
5940-00-259-9057	3	18	6240-00-683-0560	2	25
6660-00-262-1682	1	36	5305-00-715-1199	3	15
6660-00-262-1683	1	1	5310-00-722-5998	2	47
5325-00-263-6632	2	32	5935-00-725-1479	2	6
5355-00-274-8035	2	19	5940-00-727-4588	6	17
5330-00-285-5342	2	7	5305-00-727-8833	5	4
5330-00-287-8929	2	3	5935-00-755-3425	2	1
6105-00-306-9501	5	40	5935-00-755-3506	7	9
6105-00-306-9501	6	12	5935-00-762-1053	4	23
5305-00-321-2318	5	37	5305-00-763-6962	6	2
6250-00-324-4966	2	28	5305-00-766-2422	3	1
5935-00-331-3073	6	46	5905-00-766-8221	4	8
4140-00-334-6240	6	5	5305-00-770-2533	5	35
5905-00-339-7487	4	42	5305-00-770-2579	5	26
5905-00-339-7488	4	40	5305-00-770-2579	6	21
5999-00-340-1319	6	22	5910-00-782-1973	4	21
6625-00-341-5219	2	17	5910-00-783-9403	4	5
5999-00-341-5298	5	24	5935-00-818-3426	7	7
6660-00-342-9572	2	59	6625-00-341-5250	2	8
6660-00-345-8998	2	30	5330-00-841-2366	5	21
6660-00-345-9056	2	48	5961-00-842-6937	4	12
6660-00-345-9191	2	41	5961-00-842-9864	4	30
6660-00-345-9193	2	49	5935-00-845-6764	7	1
6660-00-345-9221	6	3	5340-00-855-1259	2	13
6660-00-345-9246	6	23	5310-00-880-5976	2	66
6660-00-345-9262	5	1	5930-00-892-9362	2	5
			5935-00-901-5782	5	34
			5905-00-902-0339	4	36

**NATIONAL STOCK NUMBER
AND PART NUMBER INDEX**

STOCK NUMBER	FIG.	ITEM	STOCK NUMBER	FIG.	ITEM
5905-00-905-2787	4	32	5310-00-934-9748	4	16
5305-00-926-5595	6	44	5310-00-934-9759	7	4
5310-00-928-2690	5	8	5310-00-934-9761	2	46
5310-00-928-2690	6	35	5310-00-934-9761	3	10
5310-00-929-6395	2	36	5905-00-936-7548	4	9
5310-00-929-6395	3	36	5305-00-941-3551	5	42
5310-00-929-6395	6	7	5905-00-955-0171	4	18
5310-00-933-8118	1	12	5905-00-964-0395	4	37
5310-00-933-8118	1	28	5905-00-974-5526	4	31
J5310-00-933-8118	4	15	5905-00-975-1653	4	19
5310-00-933-8118	5	17	5305-00-980-3934	5	6
5310-00-933-8118	6	26	5905-00-982-0478	4	17
5310-00-933-8119	7	3	5905-00-982-0937	4	29
5310-00-934-9748	1	11	5905-00-992-5341	4	20
5310-00-934-9748	1	29			

PART NUMBER	FSCM	FIG. NO.	ITEM NO.	PART NUMBER	FSCM	FIG. NO.	ITEM NO.
AN3066-10	81352	2	24	MS51957-12	96906	4	14
CL907L	03911	6	37	MS51957-12	96906	6	14
CP402UM	80058	1	19	MS51957-13	96906	5	7
CS13BD226K	81349	4	5	MS51957-13	96906	6	8
CS13BE106K	81349	4	21	MS51957-14	96906	1	13
CS138E476K	81349	4	4	MS51957-14	96906	1	27
JAN1N277	81349	4	7	MS51957-14	96906	5	16
JAN1N914	81349	4	30	MS51957-14	96906	6	24
JAN2N2222	81349	4	28	MS51957-15	96906	5	33
JAN2N297	81349	4	24	MS51957-17	96906	6	6
JAN2N706	81349	4	12	MS51957-25	96906	2	60
KN500B	95146	2	19	MS51957-27	96906	2	51
MC1563R	16333	4	22	MS51957-27	96906	3	37
MC1569R	16333	4	13	MS51957-28	96906	6	16
MC1741G	16333	4	33	MS51957-3	96906	2	10
ML614-G	80058	1	20	MS51957-3	96906	5	45
ML616TMQ22	80058	1	35	MS51957-3	96906	6	34
MS15795-805	96906	2	47	MS51957-30	96906	2	35
MS15795-806	96906	2	66	MS51957-31	96906	2	65
MS171500	96906	5	36	MS51957-8	96906	5	19
MS18064-1	96906	5	6	MS51959-1	96906	3	1
MS18064-6	96906	6	44	MS51959-13	96906	5	35
MS20426A3-6	96906	2	58	MS51959-15	96906	5	26
MS25271-13	96906	3	5	MS51959-15	96906	6	21
MS25271-3	96906	3	13	MS51959-27	96906	6	2
MS28775-011	96906	2	40	MS51959-3	96906	5	4
MS28775-013	96906	2	42	MS51981-72	96906	3	15
MS29513-008	96906	6	33	M21097-1-136	81349	4	23
MS29513-017	96906	2	29	N5030L	97539	2	5
MS29513-024	96906	5	3	N9030X1-4	97539	2	13
MS29513-030	96906	5	21	PT02A10-6P	77820	5	34
MS29513-252	96906	2	34	PT06A10-6P	77820	7	7
MS35214-1	96906	3	17	PT06A10-6S	77820	7	9
MS35214-29	96906	3	53	PT06A14-19P	77820	7	1
MS35214-4	96906	3	20	PT07A10-6S	77820	2	6
MS35221-12	96906	5	48	PT07A14-19S	77820	2	2
MS35275-213	96906	5	42	PT07A14-19S	77820	7	6
MS35335-58	96906	2	50	PT07A8-3S	77820	2	1
MS35337-71	96906	5	49	RCR07G121JS	81349	4	26
MS35338-134	96906	5	8	RCR07G333JS	81349	4	25
MS35338-134	96906	6	35	RCR20G2R7JS	81349	4	3
MS35338-135	96906	1	12	RCR20G5R6JS	81349	4	27
MS35338-135	96906	1	28	RN55C1002F	81349	4	29
MS35338-135	96906	4	15	RN55C1003F	81349	4	1
MS35338-135	96906	5	17	RN55C1332F	81349	4	20
M535338-135	96906	6	26	RN55C1783F	81349	4	43
MS35338-136	96906	2	36	RN55C1913F	81349	4	44
MS35338-136	96906	3	36	RN55C1961F	81349	4	36
MS35338-136	96906	6	7	RN55C1962F	81349	4	31
MS35338-137	96906	7	3	RN55C2611F	81349	4	38
MS35489-6	96906	2	32	RN55C2741F	81349	4	37
MS35649-244	96906	1	11	RN55C3161F	81349	4	19
MS35649-244	96906	1	29	RN55C3830F	81349	4	9
MS35649-244	96906	4	16	RN55C4640F	81349	4	32
MS35649-264	96906	2	46	RN55C6810F	81349	4	18
MS35649-264	96906	3	10	RN55C8250F	81349	4	17
MS35649-284	96906	7	4	RN55D21R5F	81349	4	8
MS51023-1	96906	3	44	RN60C5113F	81349	4	35
MS51029-2	96906	6	4	SE099E01	81349	6	17
MS51957-1	96906	6	30	SMA727778	80063	2	33

SECTION IV NATIONAL STOCK NUMBER AND PART NUMBER INDEX

PART NUMBER	FSCM	FIG. NO.	ITEM NO.	PART NUMBER	FSCM	FIG. NO.	ITEM NO.
SMA727888	80063	3	41	SMB727977	80063	6	10
SMA727925	80063	3	45	SMB727979	80063	6	42
SMA727965	80063	3	KIT	SMB727980	80063	6	45
SMA727966	80063	3	KIT	SMB727981	80063	6	46
SMA727992	80063	2	9	SMB727981-2	80063	6	11
SMA728054	80063	1	7	SMB727983	80063	6	23
SMA728055	80063	1	26	SMB727984	80063	6	41
				SMB727985	80063	6	40
				SMB727986	80063	6	39
				SMB7279 7-2	06102	6	18
				SMB727998-1	80063	2	49
				SMB127998-2	80063	2	54
SMB727763	80063	1	14	SMB728006	80063	2	57
SMB727782	80063	2	39	SMB728012	80063	1	21
SMB727796	80063	5	11	SMB728016	80063	1	22
SMB727804	80063	1	30	SMB728022-1	80063	2	3
SMB727811	80063	2	67	SMB128022-2	80063	2	7
SMB727823	80063	5	10	SMB728022-3	80063	2	1A
SMB727824	80063	5	20	SMB728023	80063	2	8
SMB727825	80063	5	18	SMB128025	80063	2	14
SMB727826	80063	5	23	SMB728026	80063	2	17
SMB727827	80063	5	24	SMB128027	06102	2	20
SMB727828	80063	5	22	SMB728028	80063	2	18
SMB727829	80063	5	32	SMB728030	80063	2	23
SMB727830	80063	5	28	SMB728033	80063	2	15
SMB727831	80063	5	27	SMB728034	80063	2	16
SMB727832	80063	5	25	SMB728035	80063	2	26
SMB727835	80063	5	31	SMB728036	80063	2	31
SMB727836	80063	5	2	SMB728040	80063	2	28
SMB727837	80063	5	38	SMB728041	80063	2	30
SMB727838	80063	5	14	SMB728042	80063	7	2
SMB727842	80063	2	43	SMB728045	80063	5	29
SMB727843	80063	5	5	SMB728046	80063	6	1
SMB727850	80063	5	46	SMB728047	80063	1	9
SMB727851	80063	5	41	SMB728048	80063	1	5
SMB727855	80063	5	43	SMB728050	80063	1	15
SMB727856	80063	5	44	SMB728057	80063	6	28
SMB727857	80063	5	47	SMB128058	80063	6	32
SMB727869	80063	2	55	SMB728059	80063	6	31
SMB727870	80063	2	44	SMB728060	80063	6	25
SMB727874	80063	7	8	SMB728062	80063	6	36
SMB727878	80063	3	26	SMB728065	80063	1	18
SMB727879	80063	3	29	SMC727770	80063	1	8
SMB727880	80063	3	30	SMC727186	80063	1	3
SMB727881	80063	3	28	SMC727800	80063	1	25
SMB727882	80063	3	31	SMC727803	80063	1	24
SMB727884	80063	3	32	SNC727822	80063	5	13
SMB727885	80063	3	47	SNC721833	80063	5	30
SMB727889	80063	3	4	SMC727839	80063	5	1
SMB727892	80063	3	40	SNC727871	80063	1	16
SMB727893	80063	3	42	SMC727872	80063	1	17
SMB727894	80063	3	43	SMC727928	80063	3	7
SMB727895	80063	3	9	SMC727929	80063	3	16
SMB727898	80063	3	51	SMC?27952	80063	3	3
SMB727902	80063	3	8	SMC727978	06102	6	22
SMB727910	80063	3	52	SMC727996	80063	4	39
SMB727911	80063	3	38	SMC728003	80063	2	61
SMB727912	80063	3	39	SNC728005	80063	2	59
SMB727913	80063	3	50	SMC728008	80063	2	62
SMB727914	80063	3	24	SMC728010	80063	1	31
SMB727917	80063	3	22	SMC728010-1	80063	1	32
SMB727918	80063	3	19	SMC728011	80063	2	56
SMB727919	06102	3	21	SMC728029	80063	2	22
SMB727921	80063	3	23	SMC728051	80063	2	53
SMB727922	80063	3	34	SMD727761	80063	1	6
SMB727923	80063	3	6	SMD727762	80063	1	10
SMB727931	80063	3	55	SMD727787	80063	1	2
SMB727932	80063	3	54	SMD727789	80063	1	23
SMB727933	80063	3	2	SMD727798	80063	1	33
SMB727934	80063	2	37	SMD727801	80063	1	1
SMB727958	80063	3	27	SMD727806	80063	2	48
SMB727960	80063	3	12	SMD727807	80063	2	45
SMB727961	80063	3	46	SMD727821	80063	1	34
SMB727962	06102	3	49	SMD727876	80063	3	25
SMB727963	80063	3	11	SMD727817	80063	3	33
SMB727964	80063	3	14	SMD727950	80063	2	38
SMB727972	80063	6	3	SMD727971-1	80063	6	20
SMB727973	80063	6	5	SMD727997	80063	2	52
SMB727975	80063	6	9	SMD728021	80063	1	36
SMB727976	06102	6	19	SMD728061	80063	6	38

SECTION IV NATIONAL STOCK NUMBER AND PART NUMBER INDEX

PART NUMBER	FSCM	FIG. NO.	ITEM NO.	PART NUMBER	FSCM	FIG. NO.	ITEM NO.
SSB50N	01226	5	12	40Y202	02111	4	40
TGP10	26957	4	11	40Y203	02111	4	42
YS144003	97794	6	15	5GAD10	26957	4	2
ZSP6-037-4	06102	1	4	5GAS10	26957	4	34
1702	11534	2	12	523H6	79963	2	64
2-56UNC2AX1-16	06102	5	37	683H144	79963	3	35
2N4236	81349	4	6	690	06102	5	9
2300A	06102	2	21	690	06102	5	39
26PC11-213-6	50778	5	40	690	06102	6	13
26PC11-213-8	50778	6	12	7101	09353	2	11
341-093	79963	3	18	7201	09353	2	4
345	71744	2	25	7240	71744	6	29
4-1930-2900-201	72619	2	27	75H120	79963	6	27
40Y104	02111	4	45	7888	81564	4	10
40Y201	02111	4	41	809H6	79963	6	43

LATEST NATIONAL STOCK NUMBER AND PART NUMBER ASSIGNMENTS

STOCK NUMBER	FIG.	ITEM
6660-00-475-8799	3	51
6660-00-543-1368	1	19
5935-00-899-5878	2	2
5935-00-899-5878	7	6

PART NUMBER	FSCM	FIG. NO.	ITEM NO.
SMB727834	80063	2	41
SMB727854	80063	5	15
SMB727873	80063	7	5
SMB727897	80063	3	48
SMB728007	80063	2	63

By Order of the Secretary of the Army:

FRED C. WEYLAND
General, United States Army
Chief of Staff

Official:

PAUL T. SMITH
Major General, United States Army
The Adjutant General

DISTRIBUTION:

Active Army:

USASA (2)	USAICS (3)
COE (1)	MAAG (1)
TSG (1)	USARMIS (1)
USAARENBD (1)	Instls (2) except
DARCOM (1)	Ft Gordon (10,
TRADOC (2)	Ft Huachuca (10)
OS Maj Comd (4)	Ft Richardson (ECOM ofc) (2)
LOGCOMDS (3)	Ft Carson (5)
MICOM (2)	LBAD (14)
TECOM (2)	SAAD (30)
USACC (4)	TOAD (14)
MDW(1)	SHAD (3)
Armies (2)	Ft Gillem (10)
Corps (2)	Sig FLDMS (1)
HISA (Ft Monmouth) (33)	USAERDAA (1)
Svc Colleges (1)	USAERDAW (1)
(USASESS (5)	Units org under fol TOE:
USAADS (2)	(1 copy each unit)
USAFAS (2)	6186
USAARMS (2)&201	
USAIS (2)	64302
USAES (2)	29134

NG: None

USAR: None

For explanation of abbreviations used, see AR 3104-50.

RECOMMENDED CHANGES TO EQUIPMENT TECHNICAL PUBLICATIONS



THEN... JOT DOWN THE DOPE ABOUT IT ON THIS FORM, CAREFULLY TEAR IT OUT, FOLD IT AND DROP IT IN THE MAIL!

SOMETHING WRONG WITH THIS PUBLICATION?

FROM: (PRINT YOUR UNIT'S COMPLETE ADDRESS)

DATE SENT

PUBLICATION NUMBER

PUBLICATION DATE

PUBLICATION TITLE

BE EXACT... PIN-POINT WHERE IT IS

IN THIS SPACE TELL WHAT IS WRONG AND WHAT SHOULD BE DONE ABOUT IT:

PAGE NO.	PARA-GRAPH	FIGURE NO.	TABLE NO.
----------	------------	------------	-----------

TEAR ALONG PERFORATED LINE

PRINTED NAME, GRADE OR TITLE, AND TELEPHONE NUMBER

SIGN HERE:

DA FORM 2028-2 JUL 79

PREVIOUS EDITIONS ARE OBSOLETE.

P.S.—IF YOUR OUTFIT WANTS TO KNOW ABOUT YOUR RECOMMENDATION MAKE A CARBON COPY OF THIS AND GIVE IT TO YOUR HEADQUARTERS.

